

# ZOOMLION



## MAIN SPECS OF MICRO SCISSOR LIFTS

Comply with CE/ANSI/GB Standard

### HIGHLIGHTS

#### High Performance

- The efficiency of direct electric-driven almost doubles hydraulic pump-driven
- Compact dimensions ideal for low level and tight access applications
- Light weight only 895 kg
- Climbing up 25 percent grade slopes in a stowed position
- A maximum work height of 6.5m

#### Cost Effectiveness

- Modularized and unitized parts design ideal for maintenance
- Swing-out tray easy to service

#### Intelligent Connectivity

- Zoomlion AWM Remote Monitoring and Rental Management  
System quickly obtains equipment status and realizes on-line operation management

### FEATURES

#### Standard Features

GPS positioning and tracking system

Autobrake system

Drivable at full height

Proportional controls

Emergency descent system

Hour meter

All motion alarm

Emergency stop button

Extension deck (unidirectional)

Zoomlion AWM Remote Monitoring and Rental Management System \*

Fold-down handrails

On-board diagnostic

Charging protection system

Flashing amber beacon

Over tilt protective system

Scissor maintenance prop

Self-closing entry gate

Active pothole protection system

Forklift pockets

#### Accessories & Options

Platform work lights

Load sensing system

AC power to platform

Airline to platform

Horn



## ACCESS WITH ZOOMLION GREEN

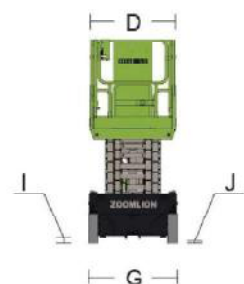
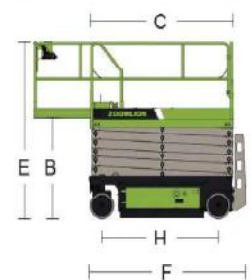
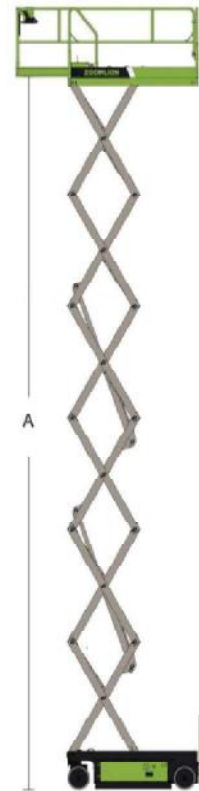
Hotline: +86 400-800-0157  
E-mail: awm@zoomlion.com

Add: ZOOMLION Wangcheng Industrial Park, Tengfei Road 997, Changsha, Hunan, China.  
Learn more at <http://en.zoomlion.com/>

# MAIN SPECS OF MICRO SCISSOR LIFTS

Comply with CE/ANSI/GB Standard

Model	ZS0407DC	ZS0407DC-LI
<b>Size</b>		
Work Height	6.5m	6.5m
A - Platform Height-Elevated	4.5m	4.5m
B - Platform Height-Stowed	0.95m	0.95m
C - Platform Length	1.29m	1.29m
D - Platform Width	0.7m	0.7m
Platform Extension	0.6m	0.6m
E - Overall Height (Rails Up)	2.05m	2.05m
Overall Height (Rails Down)	1.7m	1.7m
F - Overall Length	1.44m	1.44m
G - Overall Width	0.76m	0.76m
H - Wheelbase	1.05m	1.05m
I - Ground Clearance (Stowed)	0.06m	0.06m
J - Ground Clearance (Raised)	0.017m	0.017m
<b>Performance</b>		
Platform Capacity	240kg	240kg
Capacity on Deck Extension	100kg	100kg
Max. Number of Workers	2	2
Drive Speed (Stowed)	4km/h	4km/h
Drive Speed (Raised)	0.8km/h	0.8km/h
Turning Radius (Inside)	0.4m	0.4m
Turning Radius (Outside)	1.6m	1.6m
Lifting Motor	24V/1.2KW	24V/1.2KW
Drive Motor	24V/0.45KW	24V/0.45KW
Up/Down Time	23/25s	23/25s
Gradeability	25%	25%
Max. Working Slope (Lateral/Vertical)	1.5°/3°	1.5°/3°
Control	Proportional Control	Proportional Control
Drive	Rear Wheels	Rear Wheels
Brake	Rear Wheels	Rear Wheels
Tire	Ø230mm×80mm	Ø230mm×80mm
<b>Power</b>		
Battery	2×12V/85Ah	102Ah Li-ion Battery
Charger	24V/15A	24V/15A
<b>Weight</b>		
Gross	895kg	895kg





# ZOOMLION SCISSOR LIFTS

## HD SERIES

Comply with CE/ANSI/GB Standard

### HIGHLIGHTS

#### Cost Effectiveness

- Optimized design increases 20% more duty cycles with longer runtime.
- Precision control for stable operation.
- Large ground clearance (Pothole Protection retracted), great trafficability.

#### Easy Maintenance & Service

- Common components and modular design, easy to maintenance.
- Bilateral swing-out trays (battery & hydraulic), simple to service.
- Robust & build to last, reliable and safe.

#### Intelligent Connectivity

- Zoomlion AWM Remote Monitoring and Rental Management System quickly obtains equipment status and realizes on-line operation management. \*

### FEATURES

#### Standard Features

Proportional controls	Drivable at full height
All motion alarm	Scissor maintenance prop
Fold-down handrails	Charging protection system
Flashing amber beacon	Extension deck (unidirectional)
Self-closing entry gate	Autobrake system
Emergency descent system	On-board diagnostic
Active pothole protection system	Emergency stop button
Forklift pockets	Over tilt protective system
Hour meter	

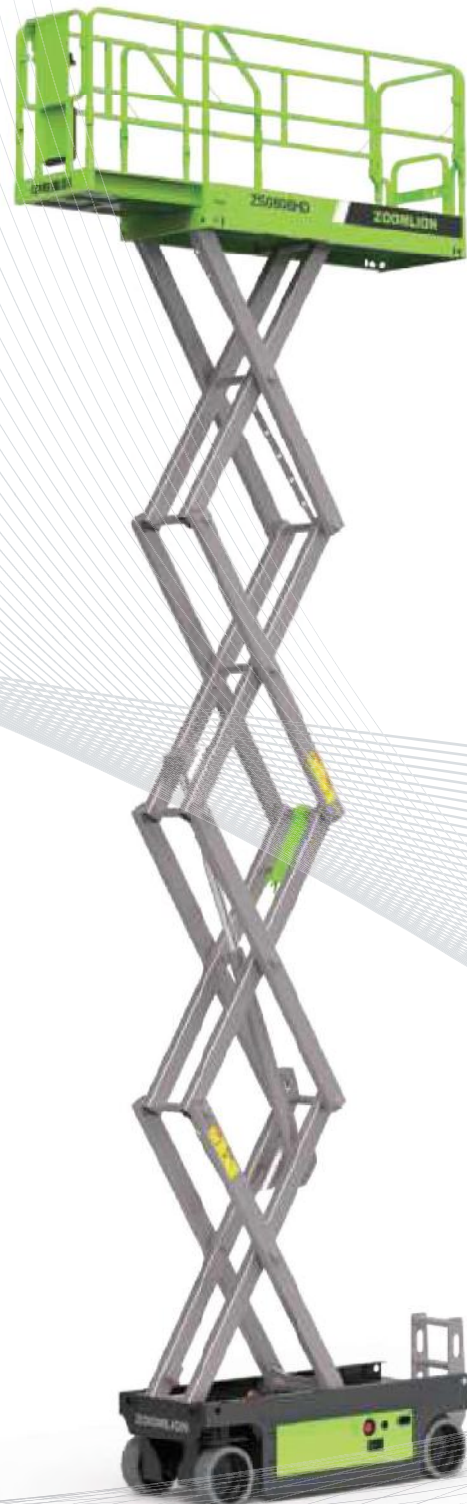
#### Accessories & Options

- Airline to platform
- AC power to platform
- Load sensing system
- Platform work lights
- Maintenance-free battery
- Horn
- Zoomlion AWM Remote Monitoring and Rental Management System \*
- GPS positioning and tracking system \*

### ACCESS WITH ZOOMLION GREEN

Hotline: +86 400-800-0157  
E-mail: awm@zoomlion.com

Add: ZOOMLION Wangcheng Industrial Park, Tengfei Road 997, Changsha, Hunan, China.  
Learn more at <http://en.zoomlion.com/>

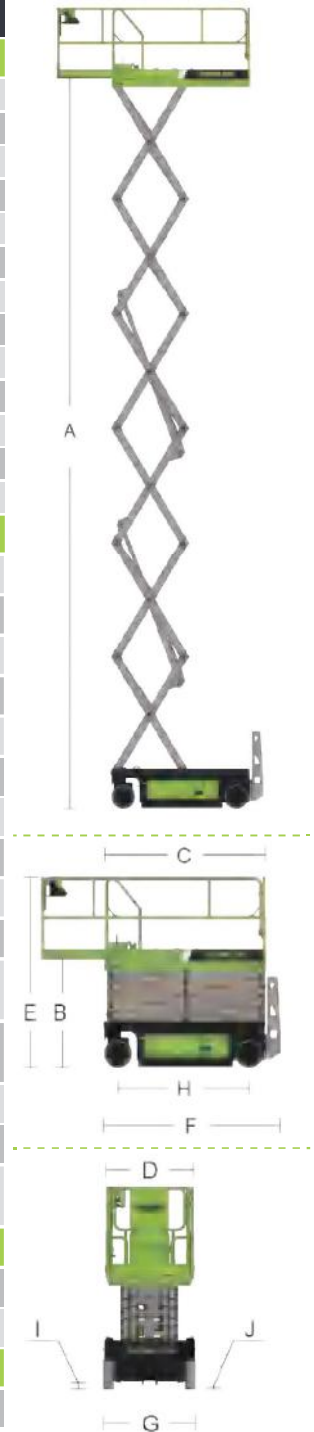


# MAIN SPECS OF SCISSOR LIFTS

## HD SERIES

Comply with CE/ANSI/GB Standard

Model	ZS1414HD	ZS1212HD	ZS1012HD	ZS0808HD	ZS0608HD	ZS0607HD
Size						
Work Height	15.7m	13.80m	11.80m	10.00m	8.00m	7.87m
A - Platform Height-Elevated	13.7m	11.80m	9.80m	8.00m	6.00m	5.87m
B - Platform Height-Stowed	1.53m	1.46m	1.33m	1.20m	1.07m	1.05m
C - Platform Dimension (Length)	2.67m	2.30m	2.30m	2.30m	2.30m	1.65m
D - Platform Dimension (Width)	1.12m	1.12m	1.12m	0.81m	0.81m	0.74m
Platform Extension	0.9m	0.91m	0.91m	0.91m	0.91m	0.91m
E - Overall Height (Rails Up)	2.65m	2.59m	2.46m	2.35m	2.22m	2.20m
Overall Height (Rails Down)	2.1m	2.05m	1.92m	1.85m	1.72m	1.79m
F - Overall Length	2.87m	2.49m	2.49m	2.49m	2.49m	1.85m
G - Overall Width	1.4m	1.15m	1.15m	0.81m	0.81m	0.76m
H - Wheelbase	2.22m	1.85m	1.85m	1.85m	1.85m	1.37m
I - Ground Clearance (Stowed)	0.11m	0.11m	0.11m	0.11m	0.11m	0.06m
J - Ground Clearance (Raised)	0.02m	0.02m	0.02m	0.02m	0.02m	0.016m
Performance						
Platform Capacity	260kg	350kg	350kg	230kg	380kg	230kg
Capacity on Deck Extension	113kg	113kg	113kg	113kg	113kg	113kg
Max. Number of Workers	2	3	2	2	2	2
Drive Speed (Stowed)	3.5km/h	3.5km/h	3.5km/h	3.5km/h	3.5km/h	3.5km/h
Drive Speed (Raised)	0.8km/h	0.8km/h	0.8km/h	0.8km/h	0.8km/h	0.8km/h
Turning Radius (Inside)	0.1m	0.1m	0.1m	0.1m	0.1m	0.1m
Turning Radius (Outside)	2.6m	2.2m	2.2m	2.1m	2.1m	1.6m
Up/Down Drive Motor	24V/4.5KW	24V/4.5KW	24V/4.5KW	24V/3.3KW	24V/3.3KW	24V/3.3KW
Up/Down Time	88/60s	62s/42s	60s/35s	31s/40s	28s/35s	20s/24s
Gradeability	25%	25%(14°)	25%(14°)	25%(14°)	30%(17°)	25%(14°)
Max. Working Slope (Lateral/Vertical)	1.5°/3°	1.5°/3°	1.5°/3°	1.5°/3°	1.5°/3°	1.5°/3°
Control	Proportional Control	Proportional Control	Proportional Control	Proportional Control	Proportional Control	Proportional Control
Drive	Front Wheels	Front Wheels	Front Wheels	Front Wheels	Front Wheels	Front Wheels
Brake	Rear Wheels	Rear Wheels	Rear Wheels	Rear Wheels	Rear Wheels	Rear Wheels
Tire	Ø381mm×127mm	Ø381mm×127mm	Ø381mm×127mm	Ø381mm×127mm	Ø381mm×127mm	Ø305mm×114mm
Power						
Battery	4×12V/300Ah	4×12V/300Ah	4×6V/240Ah	4×6V/225Ah	4×6V/225Ah	4×6V/210Ah
Charger	24V/30A	24V/30A	24V/30A	24V/30A	24V/30A	24V/30A
Weight						
Gross	3540kg	3180kg	2900kg	2060kg	1910kg	1425kg



# ZOOMLION SCISSOR LIFTS

## DC SERIES

Comply with CE/ANSI/GB Standard

### HIGHLIGHTS

#### High Performance

- The efficiency of direct electric-driven almost doubles hydraulic pump-driven.
- Up to 380kg platform capacity with better performance on-the-job.
- Front-wheel drive and brake offer mobility and versatility.

#### Easy Maintenance & Service

- Common components and modular design, easy to maintenance.
- Bilateral swing-out trays (battery & hydraulic), simple to service.
- Robust & build to last, reliable and safe.

#### Intelligent Connectivity

- Zoomlion AWM Remote Monitoring and Rental Management System quickly obtains equipment status and realizes on-line operation management. \*

### FEATURES

#### Standard Features

Proportional controls	Drivable at full height
All motion alarm	Scissor maintenance prop
Fold-down handrails	Charging protection system
Flashing amber beacon	Extension deck (unidirectional)
Self-closing entry gate	Autobrake system
Emergency descent system	On-board diagnostic
Active pothole protection system	Emergency stop button
Hour meter	Over tilt protective system
Forklift pockets	

#### Accessories & Options

- Airline to platform
- AC power to platform
- Load sensing system
- Platform work lights
- Maintenance-free battery
- Horn
- Zoomlion AWM Remote Monitoring and Rental Management System \*
- GPS positioning and tracking system \*



## ACCESS WITH ZOOMLION GREEN

Hotline: +86 400-800-0157  
E-mail: awm@zoomlion.com

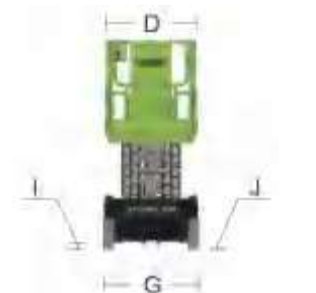
Add: ZOOMLION Wangcheng Industrial Park, Tengfei Road 997, Changsha, Hunan, China.  
Learn more at <http://en.zoomlion.com/>

# MAIN SPECS OF SCISSOR LIFTS

## DC SERIES

Comply with CE/ANSI/GB Standard

Model	ZS1414DC	ZS1212DC	ZS1012DC	ZS0808DC	ZS0608DC	ZS0607DC
Size						
Work Height	15.7m	13.80m	11.80m	10.00m	8.00m	7.87m
A - Platform Height	13.7m	11.80m	9.80m	8.00m	6.00m	5.87m
B - Platform Height (Stowed)	1.53m	1.46m	1.33m	1.20m	1.07m	1.05m
C - Platform Dimension (Length)	2.67m	2.30m	2.30m	2.30m	2.30m	1.65m
D - Platform Dimension (Width)	1.12m	1.12m	1.12m	0.81m	0.81m	0.74m
Platform Extension	0.9m	0.91m	0.91m	0.91m	0.91m	0.91m
E - Overall Height (Rails Up)	2.65m	2.59m	2.46m	2.35m	2.22m	2.20m
Overall Height (Rails Down)	2.1m	2.05m	1.92m	1.85m	1.72m	1.79m
F - Overall Length	2.87m	2.49m	2.49m	2.49m	2.49m	1.85m
G - Overall Width	1.4m	1.15m	1.15m	0.81m	0.81m	0.76m
H - Wheelbase	2.22m	1.85m	1.85m	1.85m	1.85m	1.37m
I - Ground Clearance (Stowed)	0.11m	0.11m	0.11m	0.11m	0.11m	0.06m
J - Ground Clearance (Raised)	0.02m	0.02m	0.02m	0.02m	0.02m	0.016m
Performance						
Platform Capacity	260kg	350kg	350kg	230kg	380kg	230kg
Capacity on Deck Extension	113kg	113kg	113kg	113kg	113kg	113kg
Max. Number of Workers	2	3	2	2	2	2
Drive Speed (Stowed)	4km/h	4km/h	4km/h	4km/h	4km/h	4km/h
Drive Speed (Raised)	0.8km/h	0.8km/h	0.8km/h	0.8km/h	0.8km/h	0.8km/h
Turning Radius (Inside)	0.1m	0.1m	0.1m	0.1m	0.1m	0.1m
Turning Radius (Outside)	2.6m	2.2m	2.2m	2.1m	2.1m	1.6m
Lifting Motor	24V/4.5KW	24V/4.5KW	24V/4.5KW	24V/3.3KW	24V/3.3KW	24V/3.3KW
Drive Motor	24V/1.5KW	24V/1.5KW	24V/1.5KW	24V/1.5KW	24V/1.5KW	24V/0.75KW
Up/Down Time	88/60s	62s/42s	60s/35s	31s/40s	28s/35s	20s/24s
Gradeability	25%	25%(14°)	25%(14°)	25%(14°)	30%(17°)	25%(14°)
Max. Working Slope (Lateral/Vertical)	1.5°/3°	1.5°/3°	1.5°/3°	1.5°/3°	1.5°/3°	1.5°/3°
Control	Proportional Control	Proportional Control	Proportional Control	Proportional Control	Proportional Control	Proportional Control
Drive	Front Wheels	Front Wheels	Front Wheels	Front Wheels	Front Wheels	Front Wheels
Brake	Front Wheels	Front Wheels	Front Wheels	Front Wheels	Front Wheels	Front Wheels
Tire	Ø381mm×127mm	Ø381mm×127mm	Ø381mm×127mm	Ø381mm×127mm	Ø381mm×127mm	Ø323mm×100mm
Power						
Battery	4×12V/300Ah	4×12V/300Ah	4×6V/240Ah	4×6V/225Ah	4×6V/225Ah	4×6V/210Ah
Charger	24V/30A	24V/30A	24V/30A	24V/30A	24V/30A	24V/30A
Weight						
Gross	3570kg	3210kg	2930kg	2090kg	1940kg	1455kg





# ZOOMLION

## SCISSOR LIFTS

### Li-ion SERIES

Comply with CE/ANSI/GB Standard

PRODUCTS OF CHINA CONSTRUCTION MACHINERY



## HIGHLIGHTS

### Cutting-Edge Driving System with Lithium Power

- 5-year warranty for Li-ion battery.
- Maintenance-free and durable Li-ion battery with triple longer lifetime than traditional.
- Quick-charge technology save time.
- Preheating function built in for cold weather regions.
- Smart Battery Management System (BMS) guarantees safety power.

### Intelligent Connectivity

- Zoomlion AWM Remote Monitoring and Rental Management System quickly obtains equipment status and realizes on-line operation management. \*

## FEATURES

### Standard Features

Battery Management System (BMS)	Charging protection system
Proportional controls	Extension deck (unidirectional)
All motion alarm	Autobrake system
Fold-down handrails	On-board diagnostic
Flashing amber beacon	Emergency stop button
Self-closing entry gate	Over tilt protective system
Emergency descent system	Forklift pockets
Active pothole protection system	Hour meter
Drivable at full height	Scissor maintenance prop

### Accessories & Options

- Airline to platform
- AC power to platform
- Load sensing system
- Platform work lights
- Horn
- GPS positioning and tracking system \*
- Zoomlion AWM Remote Monitoring and Rental Management System \*



## ACCESS WITH ZOOMLION GREEN

Hotline: +86 400-800-0157  
E-mail: awm@zoomlion.com

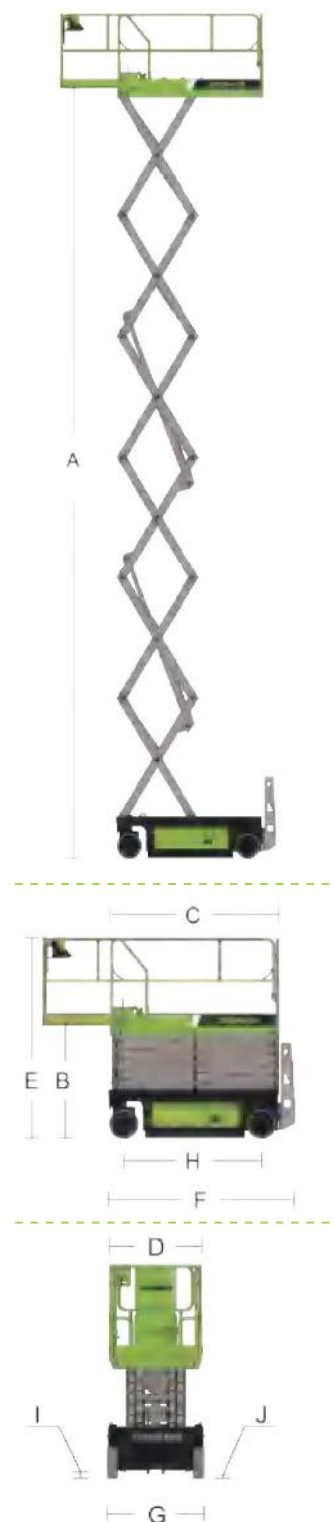
Add: ZOOMLION Wangcheng Industrial Park, Tengfei Road 997, Changsha, Hunan, China.  
Learn more at <http://en.zoomlion.com/>

# MAIN SPECS OF SCISSOR LIFTS

## HD-Li

Comply with CE/ANSI/GB Standard

Model	ZS1414HD-Li	ZS1212HD-Li	ZS1012HD-Li	ZS0808HD-Li	ZS0608HD-Li	ZS0607HD-Li
Size						
Work Height	15.7m	13.80m	11.80m	10.00m	8.00m	7.87m
A-Platform Height-Elevated	13.7m	11.80m	9.80m	8.00m	6.00m	5.87m
B-Platform Height-Stowed	1.5m	1.46m	1.33m	1.20m	1.07m	1.05m
C-Platform Dimension (Length)	2.67m	2.30m	2.30m	2.30m	2.30m	1.65m
D-Platform Dimension (Width)	1.12m	1.12m	1.12m	0.81m	0.81m	0.74m
Platform Extension	0.9m	0.91m	0.91m	0.91m	0.91m	0.91m
E-Overall Height (Rails Up)	2.65m	2.59m	2.46m	2.35m	2.22m	2.20m
Overall Height (Rails Down)	2.1m	2.05m	1.92m	1.85m	1.72m	1.79m
F-Overall Length	2.87m	2.49m	2.49m	2.49m	2.49m	1.85m
G-Overall Width	1.4m	1.15m	1.15m	0.81m	0.81m	0.76m
H-Wheelbase	2.22m	1.85m	1.85m	1.85m	1.85m	1.37m
I-Ground Clearance (Stowed)	0.11m	0.11m	0.11m	0.11m	0.11m	0.06m
J-Ground Clearance (Raised)	0.02m	0.02m	0.02m	0.02m	0.02m	0.016m
Performance						
Platform Capacity	260kg	350kg	350kg	230kg	380kg	230kg
Capacity on Deck Extension	113kg	113kg	113kg	113kg	113kg	113kg
Max. Number of Workers	2	3	2	2	2	2
Drive Speed (Stowed)	3.5km/h	3.5km/h	3.5km/h	3.5km/h	3.5km/h	3.5km/h
Drive Speed (Raised)	0.8km/h	0.8km/h	0.8km/h	0.8km/h	0.8km/h	0.8km/h
Turning Radius (Inside)	0.1m	0.1m	0.1m	0.1m	0.1m	0.1m
Turning Radius (Outside)	2.6m	2.2m	2.2m	2.1m	2.1m	1.6m
Up/Down Drive Motor	24V/4.5KW	24V/4.5KW	24V/4.5KW	24V/3.3KW	24V/3.3KW	24V/3.3KW
Up/Down Time	88s/60s	62s/42s	60s/35s	31s/40s	28s/35s	20s/24s
Gradeability	25%	25%(14°)	25%(14°)	25%(14°)	30%(17°)	25%(14°)
Max. Working Slope (Lateral/Vertical)	1.5°/3°	1.5°/3°	1.5°/3°	1.5°/3°	1.5°/3°	1.5°/3°
Control	Proportional Control	Proportional Control	Proportional Control	Proportional Control	Proportional Control	Proportional Control
Drive	Front Wheels	Front Wheels	Front Wheels	Front Wheels	Front Wheels	Front Wheels
Brake	Rear Wheels	Rear Wheels	Rear Wheels	Rear Wheels	Rear Wheels	Rear Wheels
Tire	Ø381mmx127mm	Ø381mmx127mm	Ø381mmx127mm	Ø381mmx127mm	Ø381mmx127mm	Ø305mmx114mm
Power						
Battery	250Ah Li	200Ah Li	200Ah Li	180Ah Li	180Ah Li	140Ah Li
Charger	24V/30A	24V/30A	24V/30A	24V/30A	24V/30A	24V/30A
Charger (option)	24V/60A	24V/60A	24V/60A	24V/60A	24V/60A	
Weight						
Gross	3540kg	3180kg	2900kg	2060kg	1910kg	1425kg





# ZOOMLION

## SCISSOR LIFTS

### Li-ion SERIES

Comply with CE/ANSI/GB Standard



## FEATURES

### Standard Features

Battery Management System (BMS)	Charging protection system
Proportional controls	Extension deck (unidirectional)
All motion alarm	Autobrake system
Fold-down handrails	On-board diagnostic
Flashing amber beacon	Emergency stop button
Self-closing entry gate	Over tilt protective system
Emergency descent system	Forklift pockets
Active pothole protection system	Hour meter
Drivable at full height	
Scissor maintenance prop	

### Accessories & Options

Airline to platform  
AC power to platform  
Load sensing system  
Platform work lights  
Horn  
GPS positioning and tracking system \*  
Zoomlion AWM Remote Monitoring and Rental Management System \*



Cutting-Edge Driving System  
with Lithium Power



Excellent Quick-Charge  
Technology



Preheating Function Built In For  
Cold Weather Regions



Smart Battery Management  
System (BMS) + Unit  
Control System



Intelligent Connectivity

## ACCESS WITH ZOOMLION GREEN

Hotline: +86 400-800-0157  
E-mail: awm@zoomlion.com

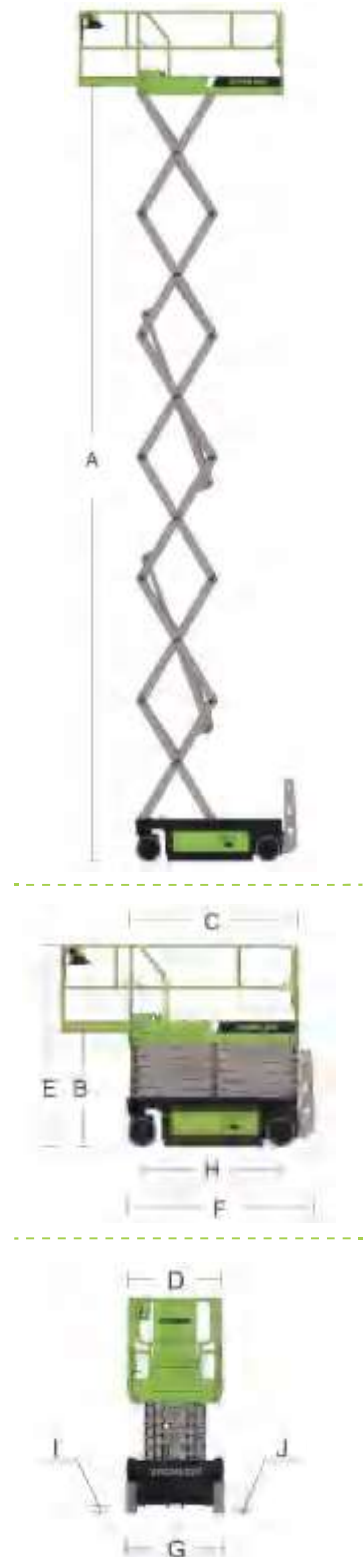
Add: ZOOMLION Wangcheng Industrial Park, Tengfei Road 997, Changsha, Hunan, China.  
Learn more at <http://en.zoomlion.com/>

# MAIN SPECS OF SCISSOR LIFTS

## DC-Li

Comply with CE/ANSI/GB Standard

Model	ZS1414DC-Li	ZS1212DC-Li	ZS1012DC-Li	ZS0808DC-Li	ZS0608DC-Li	ZS0607DC-Li
Size						
Work Height	15.7m	13.80m	11.80m	10.00m	8.00m	7.87m
A - Platform Height-Elevated	13.7m	11.80m	9.80m	8.00m	6.00m	5.87m
B - Platform Height-Stowed	1.53m	1.46m	1.33m	1.20m	1.07m	1.05m
C - Platform Dimension (Length)	2.67m	2.30m	2.30m	2.30m	2.30m	1.65m
D - Platform Dimension (Width)	1.12m	1.12m	1.12m	0.81m	0.81m	0.74m
Platform Extension	0.9m	0.91m	0.91m	0.91m	0.91m	0.91m
E - Overall Height (Rails Up)	2.65m	2.59m	2.46m	2.35m	2.22m	2.20m
Overall Height (Rails Down)	2.1m	2.05m	1.92m	1.85m	1.72m	1.79m
F - Overall Length	2.87m	2.49m	2.49m	2.49m	2.49m	1.85m
G - Overall Width	1.4m	1.15m	1.15m	0.81m	0.81m	0.76m
H - Wheelbase	2.22m	1.85m	1.85m	1.85m	1.85m	1.37m
I - Ground Clearance (Stowed)	0.11m	0.11m	0.11m	0.11m	0.11m	0.06m
J - Ground Clearance (Raised)	0.02m	0.02m	0.02m	0.02m	0.02m	0.016m
Performance						
Platform Capacity	260kg	350kg	350kg	230kg	380kg	230kg
Capacity on Deck Extension	113kg	113kg	113kg	113kg	113kg	113kg
Max. Number of Workers	2	3	2	2	2	2
Drive Speed (Stowed)	4km/h	4km/h	4km/h	4km/h	4km/h	4km/h
Drive Speed (Raised)	0.8km/h	0.8km/h	0.8km/h	0.8km/h	0.8km/h	0.8km/h
Turning Radius (Inside)	0.1m	0.1m	0.1m	0.1m	0.1m	0.1m
Turning Radius (Outside)	2.6m	2.2m	2.2m	2.1m	2.1m	1.6m
Lifting Motor	24V/4.5KW	24V/4.5KW	24V/4.5KW	24V/3.3KW	24V/3.3KW	24V/3.3KW
Drive Motor	24V/1.5KW	24V/1.5KW	24V/1.5KW	24V/1.5KW	24V/1.5KW	24V/0.75KW
Up/Down Time	88/60s	62s/42s	60s/35s	31s/40s	28s/35s	20s/24s
Gradeability	25%	25%(14°)	25%(14°)	25%(14°)	30%(17°)	25%(14°)
Max. Working Slope (Lateral/Vertical)	1.5°/3°	1.5°/3°	1.5°/3°	1.5°/3°	1.5°/3°	1.5°/3°
Control	Proportional Control	Proportional Control	Proportional Control	Proportional Control	Proportional Control	Proportional Control
Drive	Front Wheels	Front Wheels	Front Wheels	Front Wheels	Front Wheels	Front Wheels
Brake	Front Wheels	Front Wheels	Front Wheels	Front Wheels	Front Wheels	Front Wheels
Tire	Ø381mm×127mm	Ø381mm×127mm	Ø381mm×127mm	Ø381mm×127mm	Ø381mm×127mm	Ø323mm×100mm
Power						
Battery	250Ah Li	200Ah Li	200Ah Li	180Ah Li	180Ah Li	140Ah Li
Charger	24V/30A	24V/30A	24V/30A	24V/30A	24V/30A	24V/30A
Charger (option)	24V/60A	24V/60A	24V/60A	24V/60A	24V/60A	
Weight						
Gross	3570kg	3210kg	2930kg	2090kg	1940kg	1455kg





# ZOOMLION

## ARTICULATING BOOM LIFTS

### ZA14JE

Comply with CE/ANSI/GB Standard

**NEW**



## HIGHLIGHTS

### ZA14JE

- Center layout, great structural rigidity, and small boom deflection.
- Advanced dual control system (valve control + pump control) offers a energy-saving and smooth control.
- Accurate and efficient traveling AC drive system provides strong power and stable control.

## FEATURES

### Standard Features

Proportional control  
All motion alarm  
Flashing amber beacon  
Self-closing entry gate  
Emergency descent system  
Emergency stop button  
Auto-leveling system  
On-board diagnostic system  
Over tilt protection system  
Load sensing system  
4.3' LED display  
Horn

### Accessories & Options

AC power to platform  
Airline to platform  
Non-marking tire



## ACCESS WITH ZOOMLION GREEN

Hotline: +86 400-800-0157  
E-mail: [awm@zoomlion.com](mailto:awm@zoomlion.com)

Add: ZOOMLION Wangcheng Industrial Park, Tengfei Road 997, Changsha, Hunan, China.  
Learn more at <http://en.zoomlion.com/>

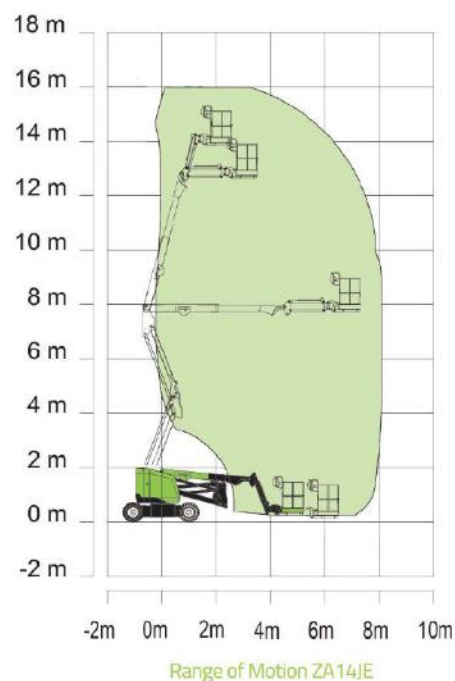
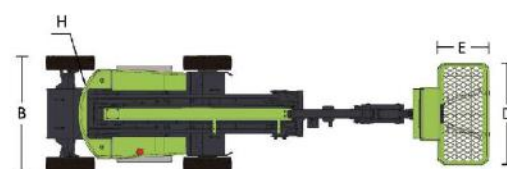
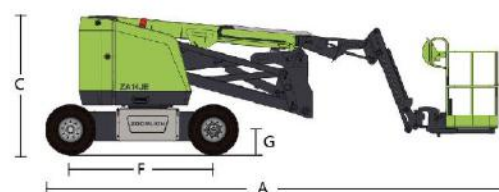


**ZOOMLION**

# ELECTRIC ARTICULATING BOOM LIFTS

Comply with CE/ANSI/GB Standard

Model	ZA14JE
<b>Size</b>	
Work Height	16m
Platform Height	14m
Horizontal Outreach	7.50m
Up and Over Height	7.74m
A - Stowed Length	6.6m
B - Stowed Width	1.75m
C - Stowed Height	2m
D - Platform Length	1.52m
E - Platform Width	0.76m
F - Wheelbase	2.05m
G - Ground Clearance	200mm
<b>Performance</b>	
Platform Capacity	230kg
Drive Speed	6.1km/h
Gradeability	30%(17°)
Axles Oscillation	
Turning Radius (Inside)	0.79m
Turning Radius (Outside)	3.15m
Swing	360°continuous
Platform Rotation	±90°
H-Tail Swing	0m
Max. Working Slope	2/4°
Max. Wind Speed	12.5m/s
<b>Power</b>	
Battery	8×6V/420Ah
Charger	48V/60A
Drive Motor	AC 32V/3.3kw
Lift Motor	DC 48V/5kw
Auxiliary Power	Manual Pump
Hydraulic Tank Capacity	30L
<b>Tire</b>	
Type	17.5×6.75 Foam-filled Tires
<b>Weight</b>	
Gross	6800kg



# ZOOMLION ARTICULATING BOOM LIFTS

## ZA14J

Comply with CE/ANSI/GB Standard



### HIGHLIGHTS



- 300kg platform capacity for higher efficiency.
- Build-in multiple pressure control leveling system to enhance stability.
- Precise load sensing system to improve overload safety operations.
- Integrated with rotary reducer to enhance rotation stability.
- Hostile Kits available for dusty working environment.
- Deadweight Lowering System for smooth operation and energy efficiency.

### FEATURES

#### Standard Features

Horn  
All motion alarm  
Proportional control  
Self-closing entry gate  
Flashing amber beacon  
GPS position and tracking system  
Remote monitoring and rental management system  
Auto-leveling system  
Emergency stop button  
Over tilt protection system  
Emergency descent system  
On-board diagnostic system  
Oscillating axle  
4.3' LED display  
Load sensing system  
Swing-out engine tray

#### Accessories & Options

Platform work lights  
Anti-collision device  
AC power to platform

### ACCESS WITH ZOOMLION GREEN

Hotline: +86 400-800-0157  
E-mail: awm@zoomlion.com

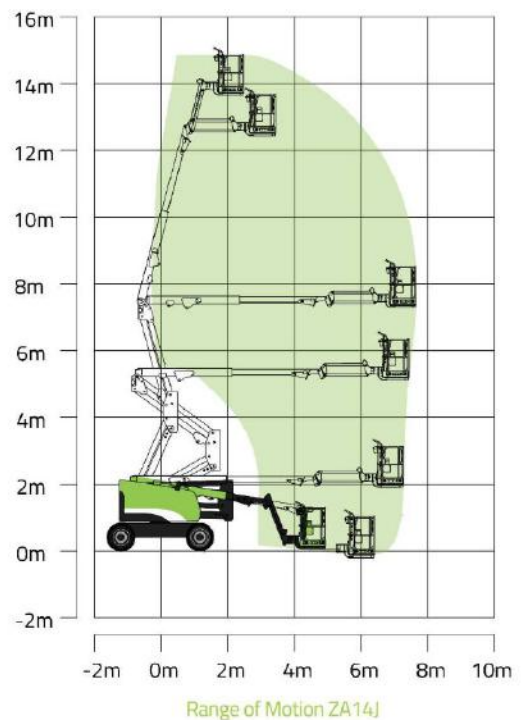
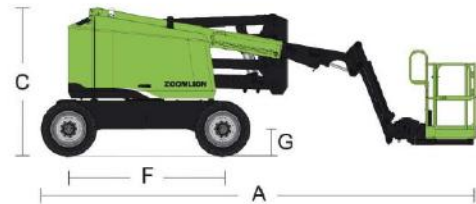
Add: ZOOMLION Wangcheng Industrial Park, Tengfei Road 997, Changsha, Hunan, China.  
Learn more at <http://en.zoomlion.com/>

**ZOOMLION**

# MAIN SPECS OF ARTICULATING BOOM LIFTS ZA14J

Comply with CE/ANSI/GB Standard

Model	ZA14J
<b>Size</b>	
Work Height	15.80m
Platform Height	13.80m
Horizontal Outreach	7.70m
Up and Over Height	7.55m
A - Stowed Length	6.57m
B - Stowed Width	2.30m
C - Stowed Height	2.27m
Platform Size	1.83m(L)*0.76m(W)
F - Wheelbase	2.36m
G - Ground Clearance	0.42m
<b>Performance</b>	
Platform Capacity	300kg
Drive Speed	6.8km/h
Gradeability	45% (24°)
Axles Oscillation	0.1m
Turning Radius (Inside)	2.06m
Turning Radius (Outside)	4.78m
Swing	355°
H-Tail Swing	0
Platform Rotation	±90°
Max. Working Slope	5°
Max. Wind Speed	12.5m/s
<b>Power</b>	
Diesel Engine	Perkins 404D-22 ; Deutz D2.9L4
Engine Power	35.7kw/2600rpm ; 36.4kw/2800rpm
Fuel Tank Capacity	65L
Auxiliary Power	12V
Control Voltage	12V
Hydraulic System Capacity	150L
Hydraulic Tank Capacity	76L
<b>Tire</b>	
Type	315/55 D20 Foam-filled Tires
<b>Weight</b>	
Gross	7100kg





# ZOOMLION ARTICULATING BOOM LIFTS

Comply with CE/ANSI/GB Standard

## HIGHLIGHTS

### ZA20JE GB

- Provide a work height of 21.45 m and lift capacity of 250 kg.
- Fast lift system directly lowers the boom from the highest position to the ground without folding the boom.
- Accurate and efficient traveling AC drive system and on-board motion AC drive system provide strong power stable control and maintenance-free motor.

### ZA20JE CE

- Provide a work height of 21.50 m and lift capacity of 250 kg.
- Fast lift system directly lowers the boom from the highest position to the ground without folding the boom.
- Accurate and efficient traveling AC drive system and on-board motion AC drive system provide strong power stable control and maintenance-free motor.
- Independent auxiliary power system for more secure applications.



## FEATURES

### Standard Features

Proportional control  
All motion alarm  
Flashing amber beacon  
Self-closing entry gate  
Emergency descent system  
Emergency stop button  
Auto-leveling system  
On-board diagnostic system  
Over tilt protection system  
Oscillating axle  
Load sensing system  
4.3' LED display  
Horn

### Accessories & Options

AC power to platform  
Airline to platform  
2.44x0.91m work platform  
Non-marking tire



## ACCESS WITH ZOOMLION GREEN

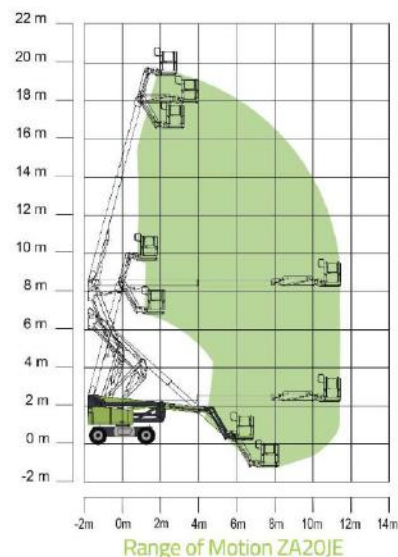
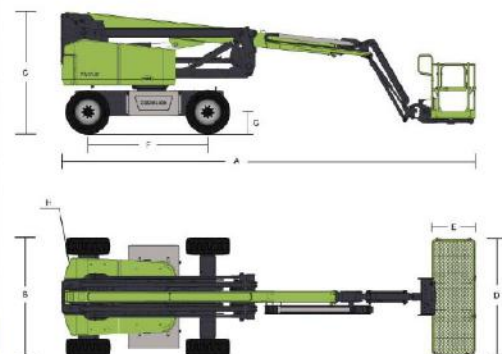
Hotline: +86 400-800-0157  
E-mail: awm@zoomlion.com

Add: ZOOMLION Wangcheng Industrial Park, Tengfei Road 997, Changsha, Hunan, China.  
Learn more at <http://en.zoomlion.com/>

# ELECTRIC ARTICULATING BOOM LIFTS

Comply with CE/ANSI/GB Standard

Model	ZA20JE GB	ZA20JE CE
<b>Size</b>		
Work Height	21.45m	21.50m
Platform Height	19.45m	19.50m
Horizontal Outreach	11.45m	11.45m
Up and Over Height	8.25m	8.30m
A - Stowed Length	8.72m	8.72m
B - Stowed Width	2.49m	2.49m
C - Stowed Height	2.52m	2.56m
D - Platform Length	1.83m	1.83m
E - Platform Width	0.76m	0.76m
F - Wheelbase	2.52m	2.52m
G - Ground Clearance	330mm	375mm
<b>Performance</b>		
Platform Capacity	250kg	250kg
Drive Speed	6.1km/h	6.1km/h
Gradeability	45%	45%
Axles Oscillation	200mm	200mm
Turning Radius (Inside)	2.78m	2.78m
Turning Radius (Outside)	5.49m	5.49m
Swing	400°non-continuous	360°continuous
Platform Rotation	±90°	±90°
H-Tail Swing	0.6m	0.6m
Max. Working Slope	3/5°	3/5°
Max. Wind Speed	12.5m/s	12.5m/s
<b>Power</b>		
Battery	8×6V/420Ah	8×6V/420Ah
Charger	48V/35A	48V/60A
Drive Motor	AC 32V/3.3kw	AC 32V/3.3kw
Lift Motor	AC 32V/10kw	AC 32V/10kw
Auxiliary Power	Manual Pump	12V DC
Hydraulic Tank Capacity	75L	75L
<b>Tire</b>		
Type	33×12 D610 Foam-filled Tires	355/55 D625 Foam-filled Tires
<b>Weight</b>		
Gross	9200kg	9200kg





# ZOOMLION TELESCOPIC BOOM LIFTS

Comply with CE/ANSI/GB Standard

## FEATURES

### Standard Features

Horn  
All motion alarm  
Proportional control  
Self-closing entry gate  
Flashing amber beacon  
GPS positioning and tracking system  
Remote monitoring and rental management system  
Auto-leveling system  
Emergency stop button  
Over tilt protection system  
Emergency descent system  
On-board diagnostic system  
Oscillating axle  
4.3' LED display  
Load sensing system  
Swing-out engine tray

### Accessories & Options

Platform work lights  
Anti-collision device  
AC power to platform



## HIGHLIGHTS

- Better work envelop performance, 10% larger than competitor.
- Zoomlion AWM Remote Monitoring and Rental Management System.
- Industry leading telematic control interface with self-diagnostic monitoring capability.
- Platform dual capacity design, up to 300/454kg.
- Smooth & stable boom extension control as low as 15mm/s.

## ACCESS WITH ZOOMLION GREEN

Hotline: +86 400-800-0157  
E-mail: awm@zoomlion.com

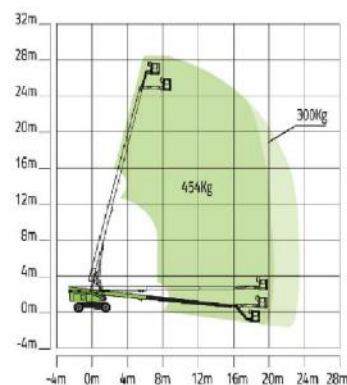
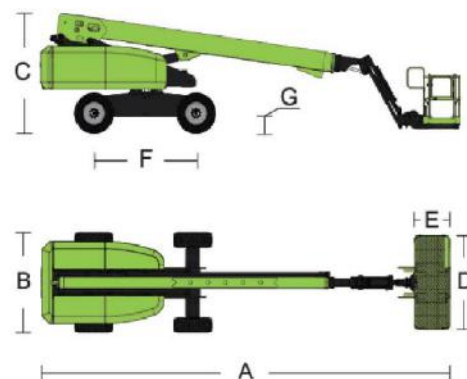
Add: ZOOMLION Wangcheng Industrial Park, Tengfei Road 997, Changsha, Hunan, China.  
Learn more at <http://en.zoomlion.com/>



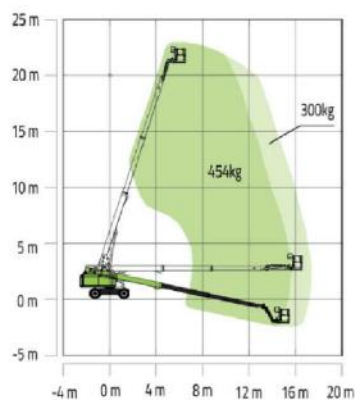
# MAIN SPECS OF TELESCOPIC BOOM LIFTS

Comply with CE/ANSI/GB Standard

Model	ZT26J	ZT20J
<b>Size</b>		
Work Height	28.20m	22.75m
Platform Height	26.20m	20.75m
Horizontal Outreach	22.71m	16.80m
A - Stowed Length	12.5m	10.36m
B - Stowed Width	2.49m	2.49m
C - Stowed Height	2.80m	2.78m
D - Platform Length	2.44m	2.44m
E - Platform Width	0.91m	0.91m
F - Wheelbase	3.05m	2.52m
Wheelbase	2.05m	2.13m
G - Ground Clearance	0.40m	0.42m
<b>Performance</b>		
Platform Capacity (Unrestricted/Restricted)	300kg/454kg	300kg/454kg
Drive Speed (Working)	5.5km/h	6.0km/h
Gradeability	45% (24°)	45% (24°)
Turning Radius (Inside)	3.66m	2.4m
Turning Radius (Outside)	6.86m	5.4m
Turntable Swing	360° continuous	360° continuous
Platform Rotation	±90°	±90°
Tail Swing	1.60m	1.45m
Jib (Range of Articulation)	130° (-55°~75°)	135° (-60°~75°)
Max. Working Slope	3°	3°
Max. Wind Speed	12.5m/s	12.5m/s
<b>Power</b>		
Engine	Deutz TD2.9 L4/ Cummins QSF2.8	Deutz D447 L4/ Perkins 404D-22T
Fuel Tank Capacity	150L	130L
Control Voltage	12V DC	12V DC
Hydraulic Tank Capacity	150L	150L
Drive Mode	4WD	4WD
Steering Mode	Front-wheel	Front-wheel
<b>Tire</b>		
Type	15-625 Foam-filled Tires	355/55D-625 Foam-filled Tires
<b>Weight</b>		
Gross	18900kg	12200kg



ZT26J Working Envelope



ZT20J Working Envelope

# ZOOMLION TELESCOPIC BOOM LIFTS

## ZT34J

Comply with CE/ANSI/GB Standard

**NEW**

## HIGHLIGHTS

- Better work envelop performance, 10% larger than competitor.
- Zoomlion AWM Remote Monitoring and Rental Management System.
- Industry leading telematic control interface with self-diagnostic monitoring capability.
- Platform dual capacity design, up to 300/454kg.
- Smooth & stable boom extension control as low as 15mm/s.

## FEATURES

### Standard Features

Horn  
All motion alarm  
Proportional control  
Self-closing entry gate  
Flashing amber beacon  
GPS positioning and tracking system  
Remote monitoring and rental management system  
Auto-leveling system  
Emergency stop button  
Over tilt protection system  
Emergency descent system  
On-board diagnostic system  
Oscillating axle  
4.3' LED display  
Load sensing system  
Swing-out engine tray

### Accessories & Options

Platform work lights  
Anti-collision device  
AC power to platform



## ACCESS WITH ZOOMLION GREEN

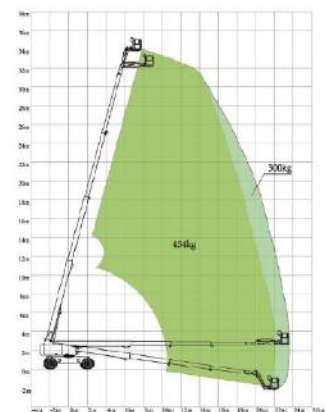
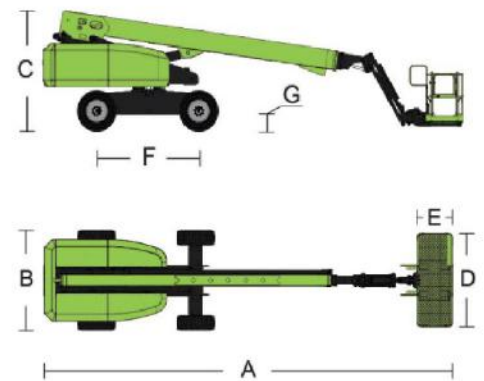
Hotline: +86 400-800-0157  
E-mail: awm@zoomlion.com

Add: ZOOMLION Wangcheng Industrial Park, Tengfei Road 997, Changsha, Hunan, China.  
Learn more at <http://en.zoomlion.com/>

# MAIN SPECS OF TELESCOPIC BOOM LIFTS

Comply with CE/ANSI/GB Standard

Model	ZT34J
<b>Size</b>	
Work Height	36m
Platform Height	34m
Horizontal Outreach	23.50m
A - Stowed Length	13.50m
B - Stowed Width	2.49m
C - Stowed Height	3m
D - Platform Length	2.44m
E - Platform Width	0.91m
F - Wheelbase	3.81m
Wheelbase	2.05/3.41m
G - Ground Clearance	0.41m
<b>Performance</b>	
Platform Capacity (Unrestricted/Restricted)	300/454kg
Drive Speed (Working)	5.5km/h
Gradeability	45%(24°)
Turning Radius (Inside)	2.80m
Turning Radius (Outside)	5.70m
Turntable Swing	360° continuous
Platform Rotation	±90°
Tail Swing	1.88m
Jib (Range of Articulation)	130° (-55°~75°)
Max. Working Slope	3°
Max. Wind Speed	12.5m/s
<b>Power</b>	
Engine	Kohler KDI2504TCR
Fuel Tank Capacity	200L
Control Voltage	12V DC
Hydraulic Tank Capacity	250L
Drive Mode	4WD
Steering Mode	Front-wheel/ Rear-wheel/Crab
<b>Tire</b>	
Type	IN445/50D710 Foam-filled Tires
<b>Weight</b>	
Gross	19200kg



ZT34J Working Envelope