

ZOOMLION TELESCOPIC BOOM LIFTS

ZT26J

Comply with CE/ANSI/GB Standard



HIGHLIGHTS

- Better work envelop performance, 10% larger than competitor.
- Zoomlion AWM Remote Monitoring and Rental Management System.
- Industry leading telematic control interface with self-diagnostic monitoring capability.
- Platform dual capacity design, up to 300/454kg.
- Smooth & stable boom extension control as low as 15mm/s.

FEATURES

Standard Features

Horn
All motion alarm
Proportional control
Self-closing entry gate
Flashing amber beacon
GPS positioning and tracking system
Remote monitoring and rental management system
Auto-leveling system
Emergency stop button
Over tilt protection system
Emergency descent system
On-board diagnostic system
Oscillating axle
4.3' LED display
Load sensing system
Swing-out engine tray

Accessories & Options

Platform work lights
Anti-collision device
AC power to platform



ACCESS WITH ZOOMLION GREEN

Hotline: +86 400-800-0157
E-mail: awm@zoomlion.com

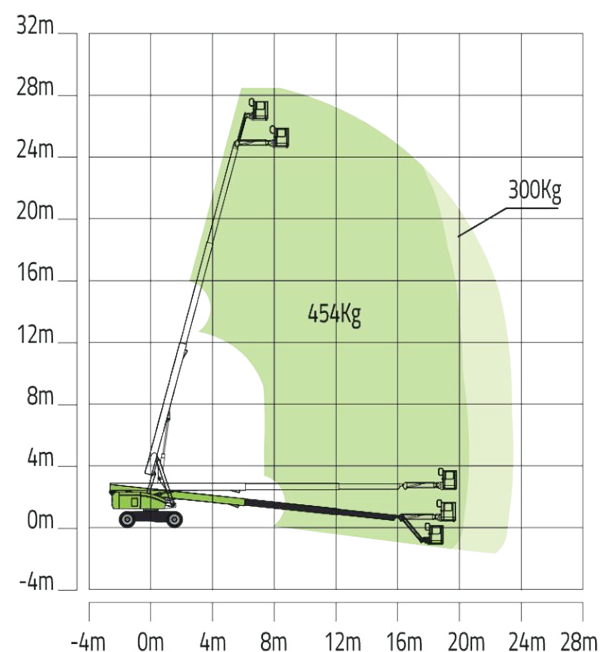
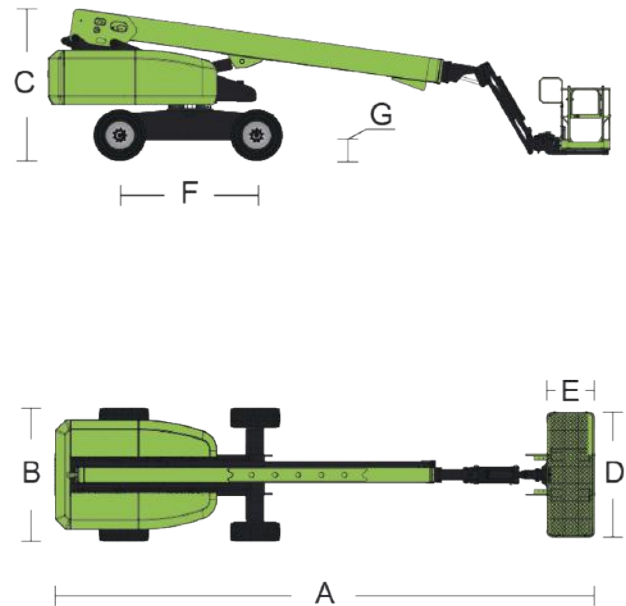
Add: ZOOMLION Wangcheng Industrial Park, Tengfei Road 997, Changsha, Hunan, China.
Learn more at <http://en.zoomlion.com/>

MAIN SPECS OF TELESCOPIC BOOM LIFTS

ZT26J

Comply with CE/ANSI/GB Standard

| Model | ZT26J |
|---|--------------------------|
| Size | |
| Work Height | 28.20m |
| Platform Height | 26.20m |
| Horizontal Outreach | 22.71m |
| A - Stowed Length | 12.5m |
| B - Stowed Width | 2.49m |
| C - Stowed Height | 2.80m |
| Platform Size | 2.44m(L)*0.91m(W) |
| F - Wheelbase | 3.05m |
| Wheelbase | 2.11m |
| G - Ground Clearance | 0.40m |
| Performance | |
| Platform Capacity (Unrestricted/Restricted) | 300kg/454kg |
| Travel Speed (Working) | 0.4km/h |
| Drive Speed (Working) | 5.6km/h |
| Gradeability | 45% (24°) |
| Turning Radius (Inside) | 3.66m |
| Turning Radius (Outside) | 6.86m |
| Turntable Swing | 360° continuous |
| Platform Rotation | ±90° |
| Tail Swing | 1.60m |
| Jib (Range of Articulation) | 130° (-55° ~ 75°) |
| Max. Working Slope | 3° |
| Max. Wind Speed | 12.5m/s |
| Power | |
| Engine | Deutz TD2.9 L4 |
| Fuel Tank Capacity | 150L |
| Control Voltage | 12V DC |
| Hydraulic Tank Capacity | 150L |
| Drive Mode | 4WD |
| Steering Mode | Front-wheel |
| Tire | |
| Type | 15-625 Foam-filled Tires |
| Weight | |
| Gross | 18900kg |



ZT26J Working Envelope